



Bidder's Conference ASAM 2.1 RFP


July 30, 2021
10:00-11:30am



City of
Philadelphia



Agenda


- **Overview of DBHIDS & CBH**
 - **Purpose of RFP**
 - **Background**
 - **About ASAM 2.1**
 - **Applicant Eligibility**
 - **Submission Process & Regionalization**
 - **Scoring**
 - **Key Dates**
 - **Question & Answer**
- 



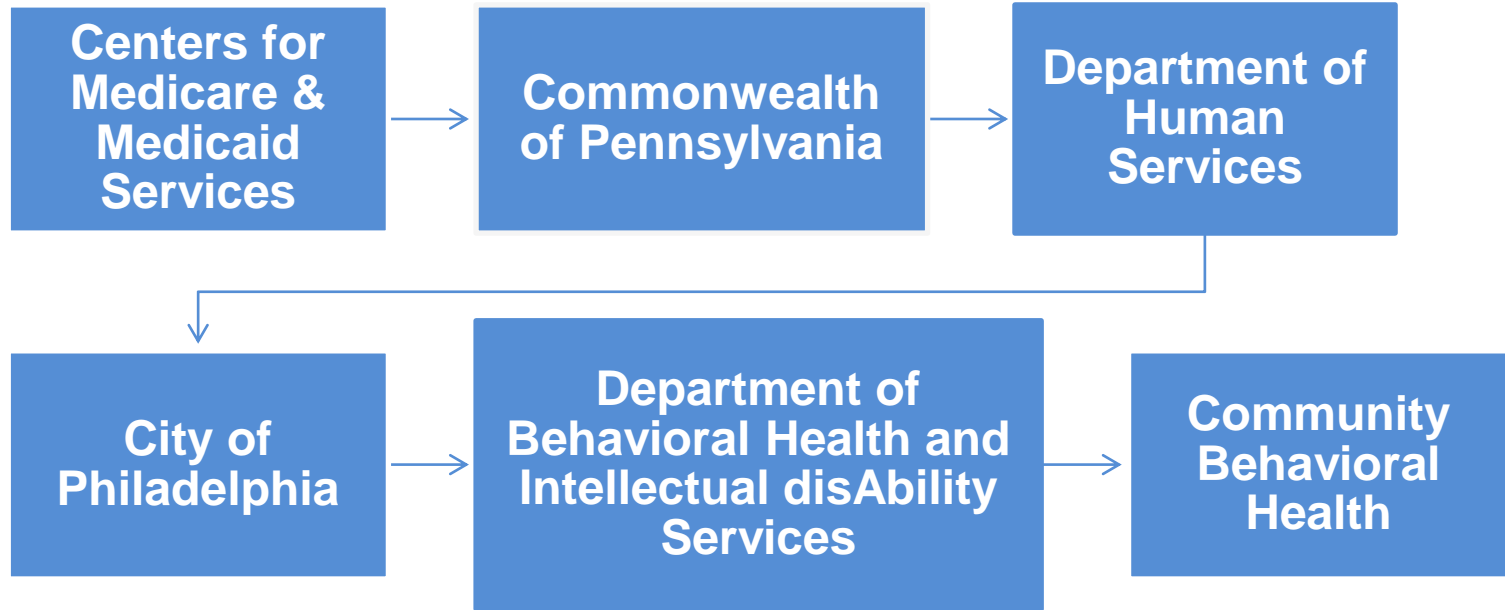
City of Philadelphia



- **DBHIDS Vision:** We envision a Philadelphia where every individual can achieve health, well-being, and self-determination.

 - **DBHIDS Mission:** The mission of the Department of Behavioral Health and Intellectual disAbility Services is to educate, strengthen, and serve individual and communities so that all Philadelphians can thrive.
- 

Philadelphia Behavioral Health HealthChoices Program Funding Stream



Philadelphia Behavioral Health System

City of Philadelphia



DEPARTMENT of BEHAVIORAL HEALTH
and INTELLECTUAL disABILITY SERVICES



Community Behavioral Health

- Single payer system operated by the City
- Over \$1B Service system for children, adults & families
- Substance Use and Mental Health
- Range of services from hospitals to outpatient programs
- Recovery and resilience system transformation




Purpose

CBH is seeking providers to deliver American Society of Addiction Medicine 2.1 Intensive Outpatient (ASAM 2.1 IOP) treatment services in Philadelphia county






Background

- In 2018 PA SUD system of care moved from the PCPC to ASAM MNC
 - ASAM is a more client-centered, outcomes-driven, and evidenced-based approach
 - ASAM 2.1 is clinically intensive, delivered by professional staff therefore PCPC 1B IOP does not accurately represent ASAM 2.1
- 



ASAM 2.1

- Acute, clinically intensive service
 - Supported by clinical & medical staff
 - Utilization will be managed by CBH- may require concurrent/continued stay reviews & discharge reviews
 - May be subject to denial by physician advisor
- 



Applicant Eligibility



Timely submission of completed proposal



Good standing with all CBH departments, NIAC, & the city



Current ASAM LOC provider, billing for MA services



Active DDAP license



In-network CBH provider, in the city of Philadelphia





Submission Process

- Complete and submit all components of section 3 in the outlined proposal format
- Save and submit all items as separate files & use the titles outlined in the proposal format in section 3 of the RFP
- Narrative responses are limited to 8 single spaced pages
- Email submissions to: Lauren.Hicks@phila.gov

Subject line: **ASAM 2.1 RFP**




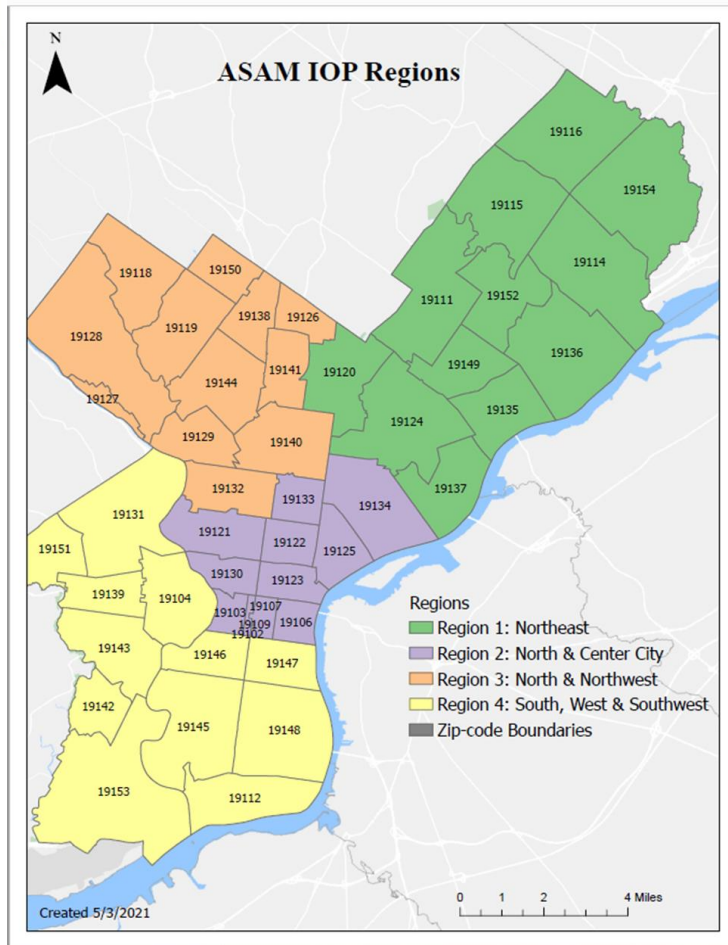


Regionalization

- CBH is regionalizing the ASAM 2.1 service to allow for a committed presence in defined areas of the city
- The city has been broken into four geographic regions
- Each region will have an ASAM 2.1 program
- Providers can apply for up to all 4 regions but will only be awarded up to 2
- Providers will provide a ranking, based on preference, of the region(s) they are applying for


Region	Zip Codes
1. Northeast Philadelphia	19154, 19116, 19115, 19114, 19136, 19152, 19111, 19149, 19135, 19124, 19137, 19120
2. Center City & North Philadelphia	19123, 19130, 19121, 19122, 19125, 19134, 19133, 19107, 19106, 19103, 19102, 19105
3. North & Northwest Philadelphia	19118, 19128, 19150, 19119, 19138, 19144, 19129, 19138, 19144, 19129, 19126, 19141, 19140, 19127, 19160, 19132
4. South, Southwest & West Philadelphia	19131, 19139, 19142, 19104, 19151, 19153, 19143, 19145, 19147, 19146, 19148








Scoring

- Scoring is based on the proposal content outlined in the RFP
 - A consensus review panel will score each proposal using a scoring tool developed in alignment with the RFP
 - Highest scoring proposal in each region will be awarded-based on provided ranking of regions
 - A provider will not be awarded more than 2 regions
- 



Tips for completing the proposal

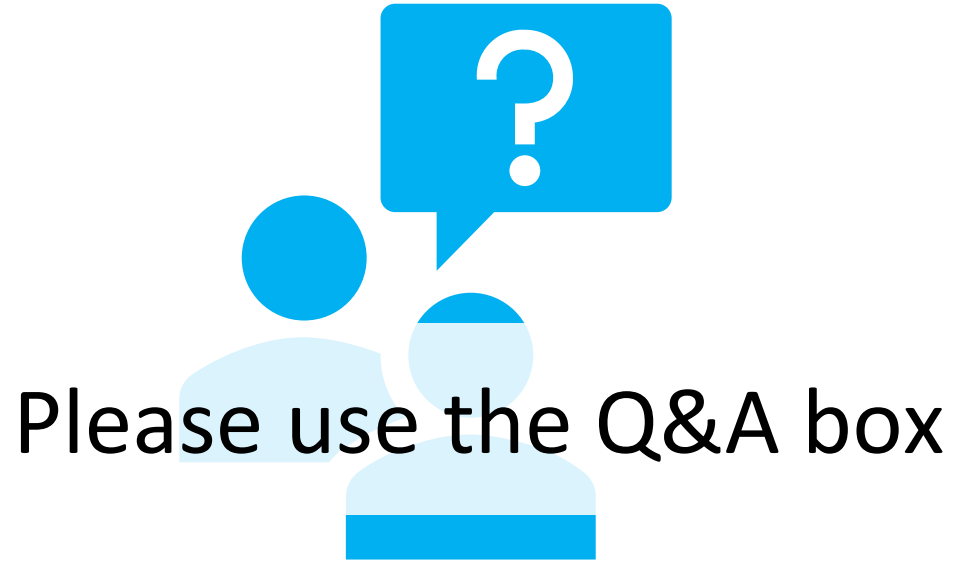
- ✓ Develop a multidisciplinary team who will be responsible for the completion of the proposal
 - ✓ Create a timeline
 - ✓ Schedule an internal review BEFORE submitting to CBH
 - ✓ Plan to submit at least one day before it is due
- 

Key Dates

July 26, 2021 July 30, 2021	<ul style="list-style-type: none">• RFP posted to CBH website• Bidder's conference
August 6, 2021	<ul style="list-style-type: none">• Deadline to submit questions- COB <u>Lauren.Hicks@phila.gov</u>
August 11, 2021	<ul style="list-style-type: none">• FAQs posted on CBH website
August 25, 2021	<ul style="list-style-type: none">• Deadline to submit proposals- 2pm <u>Lauren.Hicks@phila.gov</u>
September 29, 2021	<ul style="list-style-type: none">• Awardees posted on CBH website
January 10, 2022	<ul style="list-style-type: none">• Projected service start date



Questions



Please use the Q&A box





RFP posted under Contracting
Opportunities at www.CBHphilly.org

Please email questions to Lauren Hicks
at Lauren.Hicks@phila.gov by COB on
8/6/21



CBHphilly.org



Search ...

CBH Member Services 888-545-2600

[CLICK HERE FOR COVID-19 INFORMATION](#)

[CLICK HERE FOR APA EXTENSION NOTICE](#)

English

Powered by Google Translate



Members ▾ Providers ▾ About CBH ▾ Opportunities ▾ Contact Us ▾ DBHIDS

- Career Opportunities
- Contracting Opportunities
- Community Autism Peer Specialist Program
- FAQ

COVID-19 CORONAVIRUS

**Effective Immediately, And Until Further Notice, CBH's Administrative Offices Will Not Receive Visitors. Members Seeking Services Please Contact Member Services At 888-545-2600. Providers Should Contact Their Provider Relations Representative.*

[Information and Resources](#)



Search ...

CBH Member Services 888-545-2600

[CLICK HERE FOR COVID-19 INFORMATION](#)

[CLICK HERE FOR APA EXTENSION NOTICE](#)

English

Powered by Google Translate



Oversight and Monitoring ▾ Network ▾ Available Services ▾ Entry and Expansion ▾ Training ▾ Learn More ▾ Contact Us ▾ Publications ▾ DBHIDS

Contracting Opportunities

[Home](#) > [CBH Providers](#) > [Contracting Opportunities](#)

Please be advised that unsolicited requests for new programs or program expansions will no longer be accepted for Community Behavioral Health (CBH) services. The Philadelphia Department of Behavioral Health and Intellectual Disability Services will utilize Requests for Proposals (RFP) and Requests for Qualifications (RFQ) to acquire new services or add providers to the CBH network. Requests for the relocation of existing services may still be submitted for consideration.

Please note that the CBH website will be the only guaranteed method of notice for CBH-related RFPs and RFQs. RFPs and RFQs are issued under strict requirements and any responses to an RFP that does not meet the specified requirements, including not submitting responses within the timelines stated in the RFP, will be cause for disqualification. We encourage all current and prospective providers to monitor the CBH website regularly for new contracting opportunities.

[CBH Administrative Procurement Protocol \(Updated August 2020\)](#)

[CBH Clinical Procurement Process Protocol \(Updated August 2020\)](#)

Search ...



THANK YOU!